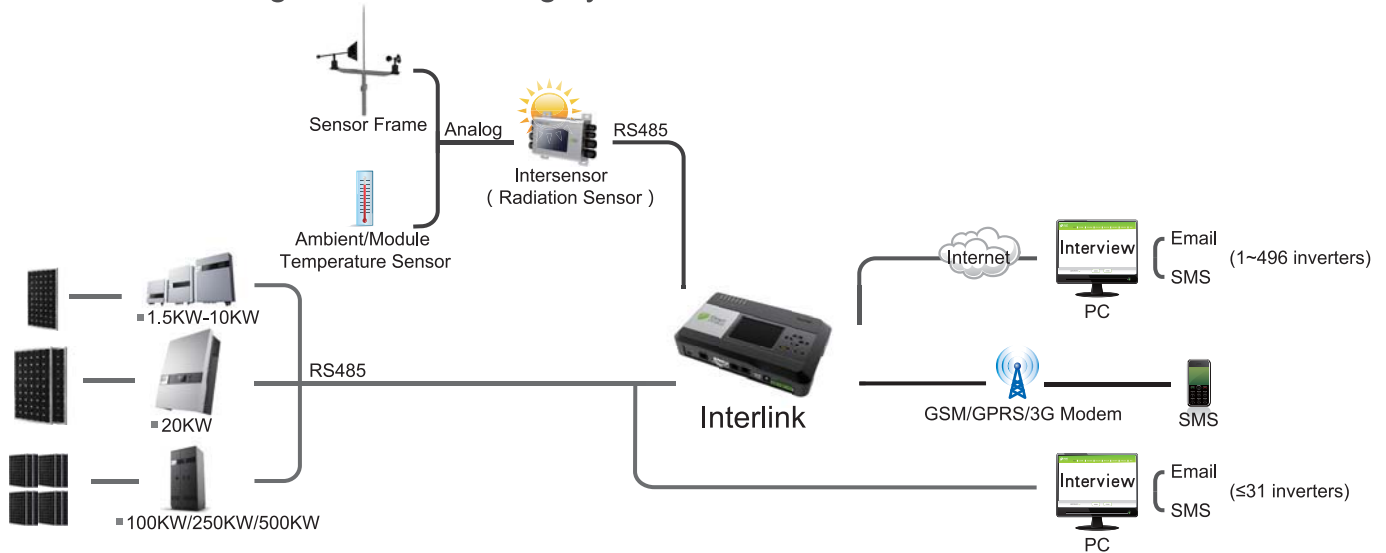


CPS PV Inverter Monitoring System

CPS PV inverter monitoring system includes datalogger “**Interlink**” and monitoring software “**Interview**”. **Interlink** forms the connection between CPS SC series inverters and **Interview** via local or remote network, so as the PV system’s running status can be automatically transmitted, and system’s reliability can be enhanced through real time monitoring.

Up to 31 inverters can be connected to **Interlink** via RS485 interface, meanwhile maximum 16 **Interlinks** can communicate in parallel with **Interview** via various communication methods. **Interlink** records current system operation data, fault messages, historical data, and etc. You will always know your PV system’s running status through any connected computer. Yield report and fault notifications can also be sent to you via email or SMS.

■ Schematic diagram of monitoring system



■ Interlink



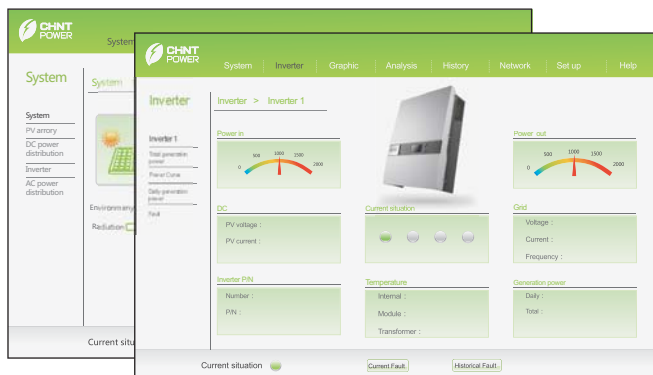
- Max 31 (Inverters) X 16 (Interlinks) = 496 points monitoring capacity
- Abundant data and information
- Friendly user interface: keypad, 3.5 inch TFT LCD and 7 LED display
- Alarm indications: LED, buzzer, LCD, SMS (optional)
- Automatic message delivery on user defined timeline
- Remote access & local access
- Multiple interfaces:RS485, RS232, USB, Ethernet
- “Pocket report” by extended SD card (512M, 1G, 2G)
- Graphic display, 2 years record



Chint Europe (UK) Ltd

Bracken Trade Park, Dumers Lane, Bury BL9 9QP
 Tel : 0161 762 9333 Fax: 0161 762 9898
 www.chintpower.com www.chint.co.uk
 E-mail: sales@chint.co.uk

■ Interview



- Abundant data and reports
- Graphic display, easy to catch
- User-friendly interface and easy operation
- Timely fault alert via Email and SMS
- Easy exporting historical report, sent weekly by email

Technical Data

Interlink

Adapter Voltage	100~240Vac 50~60Hz
Input Voltage	5V / 2Adc
Internal Battery	Lithium Cell/CR2030 3V
Power Consumption	Typical 5W, Max.10W
Memory / Extended Memory	80MB / 512M, 1G, 2G(SD Card)
Data Storage Capacity	2 years data, 50 fault records
Connection with Inverter	RS485
Remote Connection	Ethernet
Working Temp. / Storage Temp.	0°C~55°C / -20°C~65°C
Operation & Display Mode	Keypad, 3.5 inch TFT LCD, 7 LED
Weight / Dimention (WxDxH)	800g / 240mmX170mmX50mm
Digital Input	2 channels, 0Vdc~5Vdc
Analog Input	2 channels, 0Vdc~5Vdc, 4mA~20mA
Digital Output	1 channel, up to 250Vdc, 2A
Protection Degree	IP20

Interview

OS	Windows2000/XP
Hardware	CPU:Pentium III/800, Memory:512M, Hard disk:40G (minimum requirements)
Resolution	SVGA/1024X768
System Info.	Total power, daily generation power, daily CO ₂ saving, total generation power, total CO ₂ saving, radiation, environment temperature, grid voltage & frequency, etc
Inverter Info.	PV voltage & current, input power, AC voltage & current & frequency, output power, temperature (internal, module, transformer), daily generation power, total generation power, current fault, historical fault, power curve
Environment Info.	Solar radiation, Environment temperature
Fault Alert	Email and SMS
Historical Data Report	Exporting historical data and fault information report, sent weekly by email